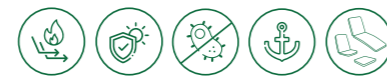


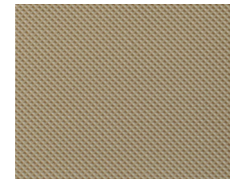
NAUTIC BIO PLUS



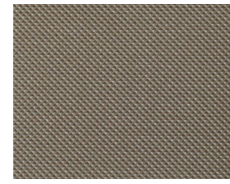
blanco 300



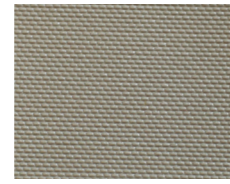
crema 304



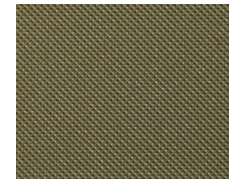
camel 305



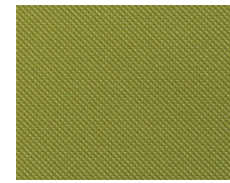
tierra 315



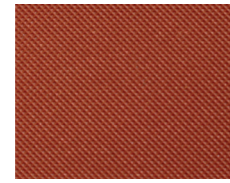
plomo 387



selva 340



lima 341



tropic 317



navy 369



negro 390

NAUTIC CLASS



blanco 00



crudo 04



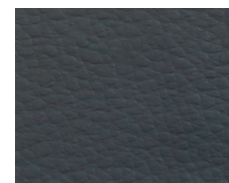
beige 05



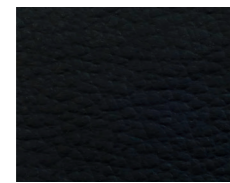
piedra 18



pizarra 72



plomo 75



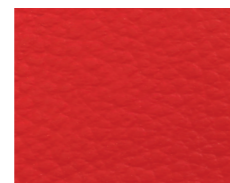
negro 90



caribe 60

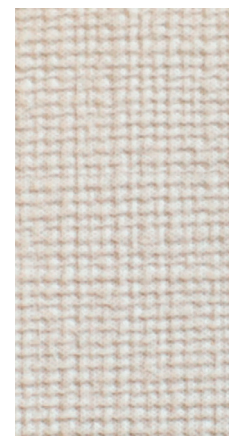
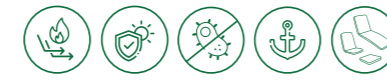


pistacho 41



rojo 29

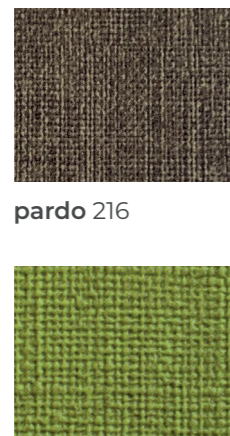
NAUTIC MELANGE / TEXTURE



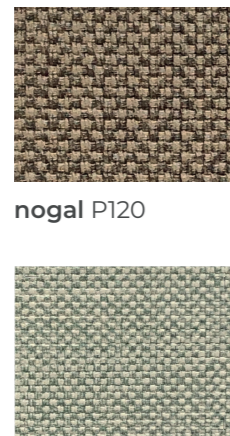
blanco 200



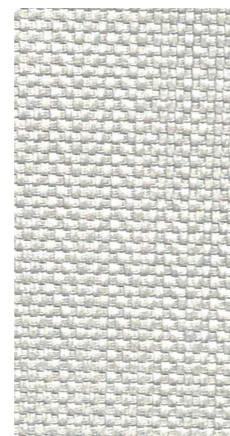
beige 218



pistacho 241



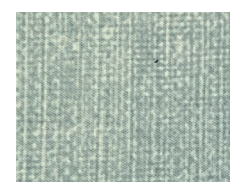
musgo P144



porcelana P100



ivory 202



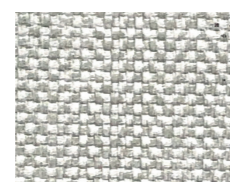
sky 263



gris 275



antracita P177



marfil P105

	ACRYLIC BASIC	OLEFIN	POLYESTER	ACRYLIC MASA SOFT	ACRYLIC MASA FORTE	TEXTILENE	NAUTIC CLASS	NAUTIC BIO PLUS	NAUTIC MELANGE
Composición Composition	100% Dralón Dralon 100%	100% Olefin Olefin 100%	100% poliéster Polyester 100%	100% Fibra acrílica tintada a la masa.	100% Fibra acrílica tintada a la masa.	83% Pvc 17% Polyester	90% vinyl 10% Polyester	87% vinilo / 13% poliéster	100% vinyl 100% Polyester
Acabado Finish	Hidrófugo Water-repellent Hydrofugue	Hidrófugo Water-repellent Hydrofugue	Hidrófugo Water-repellent Hydrofugue	Hidrófugo Water-repellent Hydrofugue	Hidrófugo Water-repellent Hydrofugue	Permeable Permeable Permeable	Impermeable Waterproof impermeable	Impermeable Waterproof impermeable	Impermeable Waterproof impermeable
Peso Weight Poids	195-220 gr/m ²	190-250 gr/m ²	200-300 gr/m ²	260 gr/m ²	300 gr/m ²	480 gr/m ²	700 gr/m ²	630 gr/m ²	830 gr/m ²
Resistencia U.V. U.V. Resistance	CERTIFIED UV PROTECT 40 - 30	UV STANDARD 801 Blocks more than 97% of uv rays	-	1000 horas	-	-	1.300 horas	1.000 horas	1.000 horas
Solidez a luz Light fastness Solidité à la lumière	6-7/8 (UNE EN ISO 105-B02:2001 Método 5)	5 años de garantía (en condiciones normales de exposición).	-	5 años de garantía (en condiciones normales de exposición).	10 años de garantía (en condiciones normales de exposición).	6-7/8	7 (ISO 105-B02)	7 (ISO 105-B02)	6 (ISO 105-B02)
Resistencia a la abrasión Abrasion resistance Résistance à l'abrasion	20.000 cycles	20.000 cycles	-	28.000 cycles	NO TESTADO NOT TESTED PAS TESTÉ	No testado Not tested Pas Testé	EN ISO 12947-2:1998 >100.000 CICLOS	EN ISO 12947-2:1998 >100.000 CICLOS	EN ISO 12947-2:1999 >100.000 CICLOS
Resistencia de tracción (Urdimbre/Trama): Tensile strength (Warp/Weft): Résistance à la traction (Chaine/Trame):	No testado Not tested Pas Testé	1647 N / 750 N (UNE EN ISO 13934-1)	No testado Not tested Pas Testé	1400 N / 950 N 5 cm. UNE EN 1394.1	1600 N / 800 N 5 cm. ISO 13934-1	No testado Not tested Pas Testé	ISO 13934-1 N/ 5 cm ≥ 170	ISO 13934-1 N/ 5 cm ≥ 150	ISO 13934-1 N/ 5 cm ≥ 150
Resistencia a la rotura (Urdimbre/Trama): Breaking elongation (Warp/Weft): Allongement à la rupture (Chaine/Trame):	986 N / 525 N (UNE EN ISO 13936-1:1999)	-	No testado Not tested Pas Testé	No testado Not tested Pas Testé	28% / 18% ISO 13934-1	No testado Not tested Pas Testé	ISO 13934-1 ≥ 25% ≥ 50%	ISO 13934-1 ≥ 25% ≥ 50%	ISO 13934-1 ≥ 25% ≥ 50%
Resistencia al desgarro (Urdimbre/Trama): Tear resistance (Warp/Weft): Résistance au déchirement (Chaine/Trame):	No testado Not tested Pas Testé	73,9 N / 43,2 N (UNE EN ISO 13937-3)	No testado Not tested Pas Testé	No testado Not tested Pas Testé	60 N / 50 N ISO 13937-2	No testado Not tested Pas Testé	ISO 13937-2 ≥ 35 N ≥ 50 N	ISO 13937-2 ≥ 25 N ≥ 40 N	ISO 13937-2 ≥ 35 N ≥ 50 N
Tratamiento ignífugo Fire retardant treatment Traitement ignifuge	×	×	×	×	×	×	UNE 1021 Parts 1-2 IMO A652 B55852 Cigarette & Match	UNE 1021 Parts 1-2 IMO A652 B55852 Cigarette & Match	UNE 1021 Parts 1-2 IMO A652 B55852 Cigarette & Match
Tratamiento antibacteriano - antihongos Antibacterial treatment - mildew resistance Traitement antibactérien - résistance à la moisissure	✓	×	×	✓	✓	×	✓	✓	✓

*Posibilidad de consultar otros colores & colecciones / *Other colours & collections available on request. / *Autres couleurs et collections sur demande

La migración de pigmentos, tinturas y colorantes como los utilizados en el denim de algunos tejados u otras prendas, es un efecto irreversible en esta tipología de productos, por lo que Exclusivas Confort Valles (Conva) no puede asumir responsabilidad alguna en las manchas ocasionadas.

The migration of pigments, dyes and colorants like the ones used in some denim jeans or other clothes is an irreversible effect on this type of products, therefore Exclusivas Confort Valles (Conva) cannot assume any responsibility for caused stains.

La migration des pigments, des colorants et des colorants comme ceux utilisés dans certains jeans en denim est un effet irréversible sur ce type de produits, donc Exclusivas Confort Valles (Conva) ne peut assumer aucune responsabilité pour les taches causées.



Parasoles
Sushades
Parasols



Cojines
Cushions
Coussins



Protección solar
Solar protection
Protection solaire



Ignífugo
Fire retardant
Ignifuge



Hidrófugo
Water repellent
Hydrofuge



Marine
Profesional
Outdoor



Antiacaros
Anti-acarus
Anti-acarien



Garantía
5 años
Solidez del color
Colour fastness
Solidité des couleurs



Respetuoso medio ambiente
Ecofriendly
Respectueux de la nature



[ES] www.conva.es



[INT] www.conva-contract.com



conva@conva.es

[@conva.contract](https://www.conva-contract.com)



CARTA DE TEJIDOS

FABRIC CHART / NUANCIER TISSUS

ACRYLIC BASIC



blanco 48



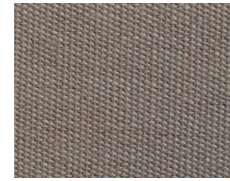
crudo 30



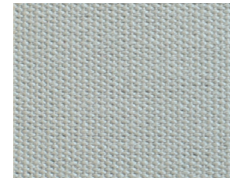
canela T81



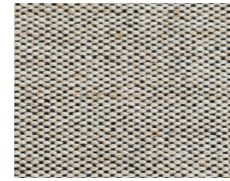
beig arena 64



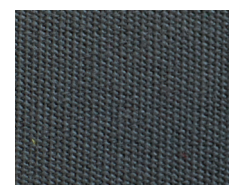
taupe C20



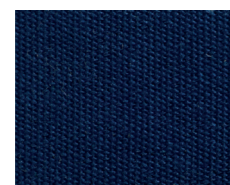
gris claro C69



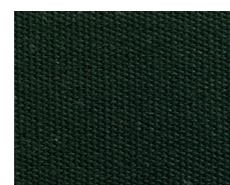
stone T65



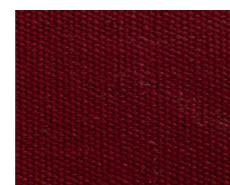
gris plomo 38



marino 57



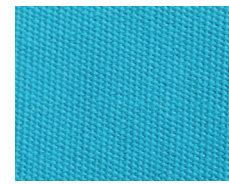
verde osc. 51



burdeos 55



rojo 65



turquesa C27



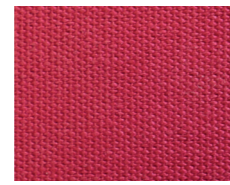
royal 45



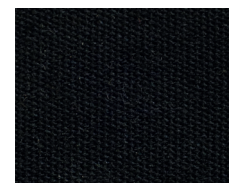
amarillo 43



naranja 63



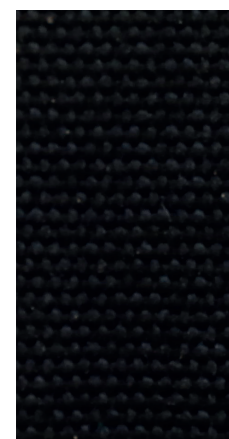
fresa T47



negro 70

OLEFIN

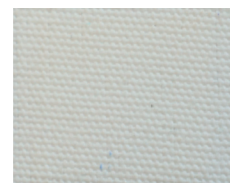
190 GR



negro 2501



antracita 2657



blanco 2602

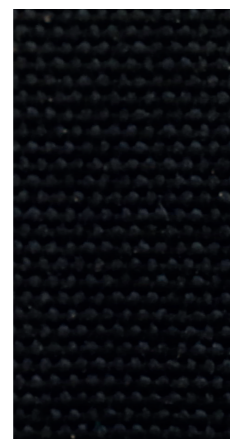


marfil 2730



taupe 2739

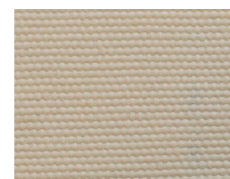
250 GR



negro P2501



antracita P2657



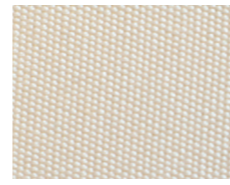
marfil P2730



ACRYLIC MASA SOFT



blanco 3701



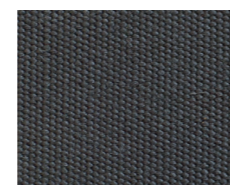
marfil 3704



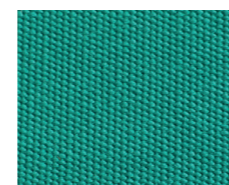
avena 3707



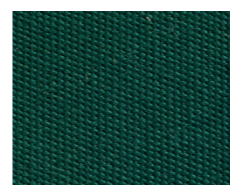
integral 3705



antracita 3731



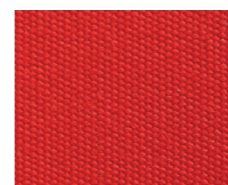
verde 3727



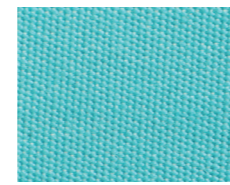
verde b. 3725



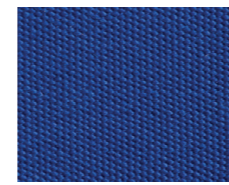
terracota 3710



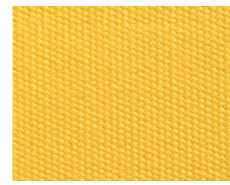
logored 1226



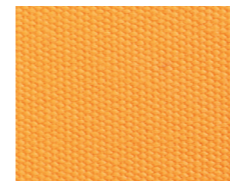
turkis 3721



azul 3722



amarillo 3714



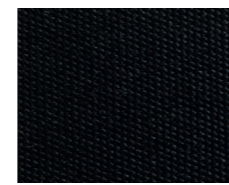
mandarina 3715



brasserie 3718

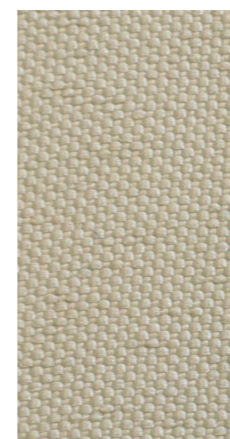


marino 3723



negro 3732

POLYESTER



b. estándar 220 gr



b. estándar 300 gr PU

FUNDAS

Covers/Housses

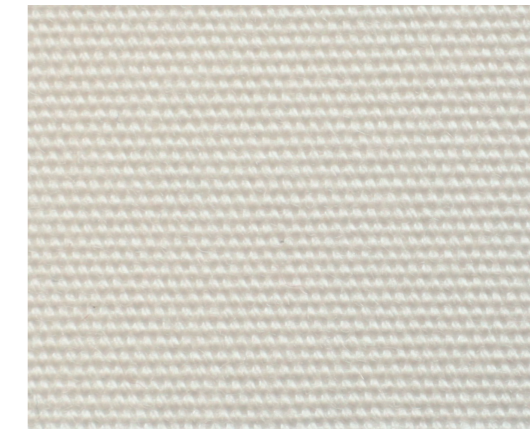


Tejido/fabric/tissu multitej

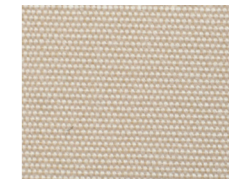
ACRYLIC MASA FORTE GREEN



COLORES ESTÁNDAR / STANDARD COLORS / COULEURS STANDARDS



blanco 2042
GREEN



marfil 2143
GREEN



granate 2101

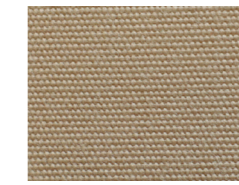


negro 2170
GREEN



antracita 8488

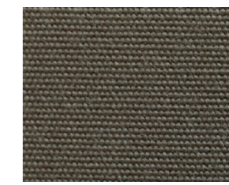
COLORES ESPECIALES / SPECIAL COLOURS / COULEURS SPÉCIALES



avena 2296
GREEN



marrón 2146



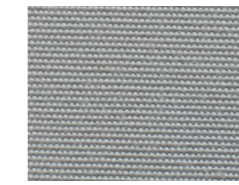
mineral 2831



café 2316



terracota 8645



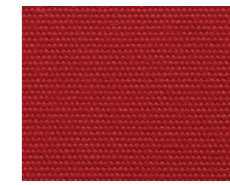
perla 2979
GREEN



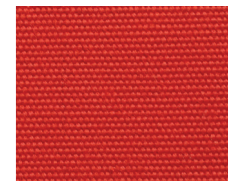
azul 2018



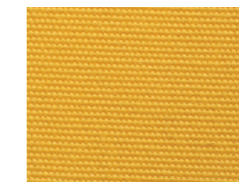
marino 2145
GREEN



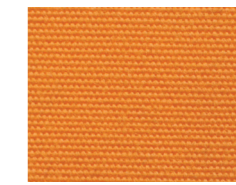
brasserie 2209
GREEN



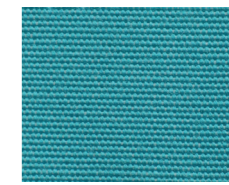
rojo 2211



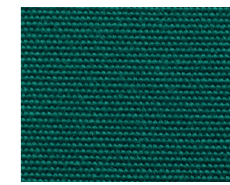
amarillo 2013
GREEN



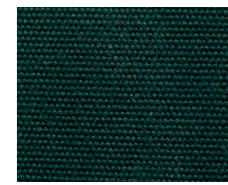
mandarina 2142



turkis 2129

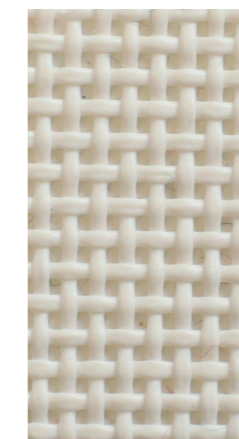


verde 2242

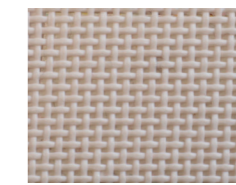


verde b. 2245
GREEN

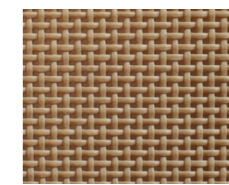
TEXTILENE



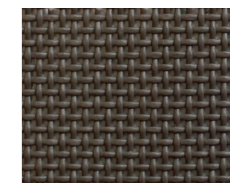
blanco 18



crudo 14



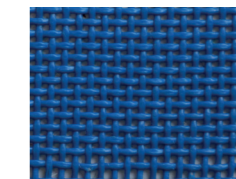
beige 15



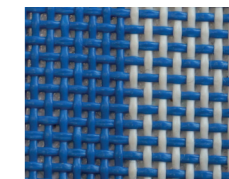
taupe 12



antracita 11



azul 16



azul/blanco 17